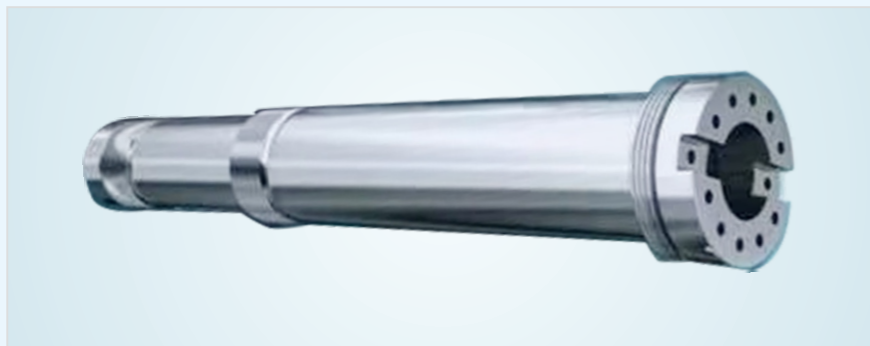
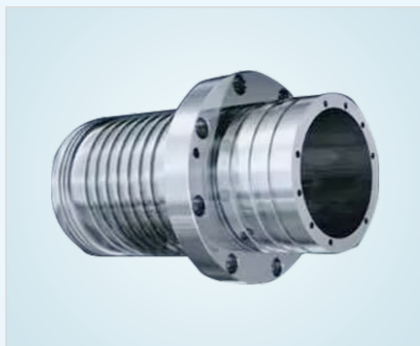


# MKG200 CNC Taper Grinder



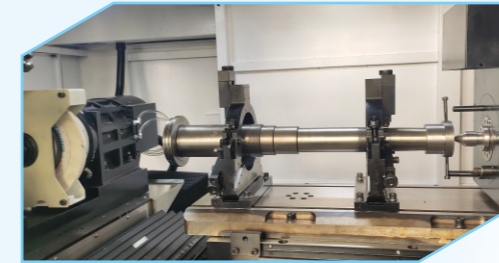
## Grinding spindle inner-outer-taper

- The machine can compound grinding inner hole, cylindrical, taper for different kind spindle.
- T type natural granite bed stand, it is good vibration attenuation.
- 4-position turntable with different type grinding wheel.
- Head stock swing angle +25°/-5° for grinding taper.

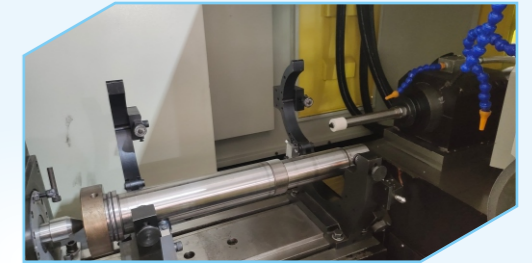


## STANDARD CONFIGURATION

- Siemens 828D control system
- External grinding wheel spindle
- Internal grinding wheel spindle
- Grinding fluid filtration system
- Automatic lubrication system
- Electric air-condition cabinet
- Spindle coolant system
- Heidenhain scales X axis
- Oil mist absorber
- Steady rest
- Measuring probe



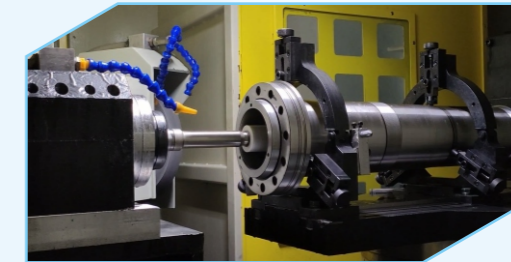
Grinding outer



Steady rest support



Grinding motor spindle



Grinding internal taper

## TECHNICAL SPECIFICATION:

Model			MKG200
Capacity	Max. clamping part length	mm	550
	Max. support diameter of central	mm	Φ200
	Min. Grinding inner hole	mm	Φ20
	Max. Workpiece weight	kg	≤200
Accuracy	Roughness	um	≤Ra0.4
	Taper runout	mm	≤0.0015
Axis (X/Z)	Machine travel	mm	X:400/Z:350
	Rapid movement speed	mm/min	10
A Axis	power	kW	2.2
	Positional accuracy	second	± 10
External grinding wheel spindle	Speed	rpm	3500
	Spindle power	kW	5.5
	Installation of the grinding wheel	mm	Φ400*32*Φ127
Internal grinding wheel spindle	Speed	rpm	36000
	Spindle power	kW	11(S1)
	Spindle mounting outside diameter	mm	Φ150
Turntable	Turntable station	pcs	4
	Repeated positioning accuracy	second	± 1
Other	Power	kW	35
	Volume (L × W × H)	mm	3350*2100*2300
	Total weight	kg	9000